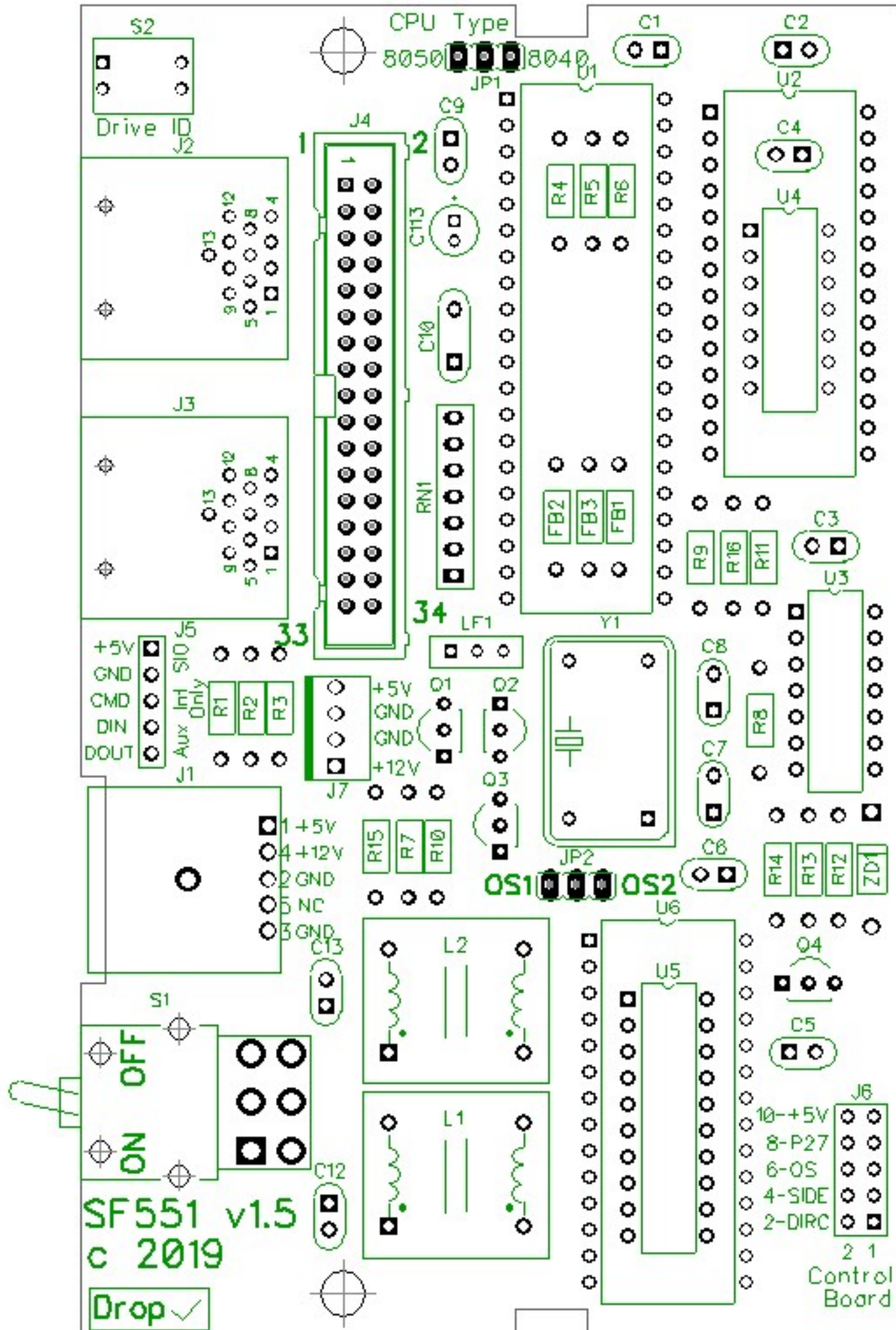


| SF551 Floppy Drive Mainboard | | | | | |
|--|-------------------|-------------------|--|------------|-------------------|
| | | | Description | Order Qty. | Ref ID |
| Salvaged from SF314/SF354 | | | | | |
| Power Switch | S1 | ? | Power Switch | 1 | S1 |
| or | | | | | |
| Power Switch | CB102550 | Best Electronics | SF354/SF314 On/Off DTDP RA Power Switch | 1 | S1 |
| Power Input Connector | J3 | ? | Power Input Connector | 1 | J1 |
| or | | | | | |
| Power Input Connector | CO70214 | Best Electronics | SF354/SF314 RA 5 pin DIN Male Connector | 1 | J1 |
| AC Filter Common Mode Chokes | L1 & L2 | ? | AC Filter Common Mode Choke | 2 | L1 & L2 |
| or | | | | | |
| PLA10AN1522R0R2B | | Murata | AC Filter Common Mode Choke | 2 | L1 & L2 |
| Salvaged from XF551 or Ebay | | | | | |
| Intel 8040/8050 CPU | U1 | Intel | 40 pin DIP cpu | 1 | U1 |
| WD1772PH | U2 | Western Digital | 28 pin DIP Floppy Drive Controller Chip | 1 | U2 |
| Eprom 2764 | U6 | Various | 28 pin Eprom chip | 1 | U6 |
| | | | | | |
| SIO Data Cables (1 or 3 ft) | CB101276/CA014122 | Best Electronics | Cut cable in half, strip and tin individual wires, ohm each for exact pin number match | 1 | |
| 13 Pin DIN MIDI Cable for Fender/Roland GC-1 | | Ebay | Cut cable in half, strip and tin individual wires, ohm each for exact pin number match and then solder to matching wire of SIO cable | 1 | |
| | | | | | |
| SF551 MAIN BOARD | | | | | |
| Mouser # | Mfr. # | Manufacturer | Description | Order Qty. | Ref ID |
| 517-4840-6000-CP | 4840-6000-CP | 3M | IC & Component Sockets 40P DUAL WIPE DIPSKT | 1 | U1 Socket |
| 517-4828-6000-CP | 4828-6000-CP | 3M | IC & Component Sockets 28P DUAL WIPE DIPSKT | 2 | U2 & U6 Socket |
| 517-4814-3000-CP | 4814-3000-CP | 3M | IC & Component Sockets 14P DUAL WIPE DIPSKT | 1 | U3 Socket |
| 595-SN74LS373N | SN74LS373N | Texas Instruments | Latches Octal D-Type | 1 | U5 |
| 595-SN74LS14N | SN74LS14N | Texas Instruments | Inverters Hex Schmitt-Trigger | 1 | U4 |
| 595-SN74LS38N | SN74LS38N | Texas Instruments | Logic Gates Quad 2-Input | 1 | U3 |
| 647-QYX1H333JTP3TA | QYX1H333JTP3TA | Nichicon | Film Capacitors 50V .033uF 5% | 2 | C7 & C8 |
| 647-USA1H010MDD1TE | USA1H010MDD1TE | Nichicon | Aluminum Electrolytic Capacitors - Radial Leaded 1uF 85c 20% | 1 | C113 |
| 581-SR201C104KARTR1 | SR201C104KARTR1 | AVX | Multilayer Ceramic Capacitors MLCC - Leaded 100volts 0.1uF 10% X7R | 8 | C1 - C6 C12 & C13 |
| 810-FK18C0G1H180J | FK18C0G1H180J | TDK | Multilayer Ceramic Capacitors MLCC - Leaded 18pF 50V COG 5% | 1 | C9 |
| 810-FK28C0G1H270J | FK28C0G1H270J | TDK | Multilayer Ceramic Capacitors MLCC - Leaded 27pF 50V COG 5% | 1 | C10 |
| 771-1N4728A113 | 1N4728A,113 | Nexperia | Zener Diodes DIODE ZENER 5 PCT | 1 | ZD1 |
| 291-100K-RC | 291-100K-RC | Xicon | Carbon Film Resistors - Through Hole 100Kohms 0.05 | 3 | R1 - R3 |
| 291-10K-RC | 291-10K-RC | Xicon | Carbon Film Resistors - Through Hole 10Kohms 0.05 | 1 | R7 |
| 291-4.7K-RC | 291-4.7K-RC | Xicon | Carbon Film Resistors - Through Hole 4.7Kohms 0.05 | 5 | R4,R6,R10,R11,R16 |
| 291-3.3K-RC | 291-3.3K-RC | Xicon | Carbon Film Resistors - Through Hole 3.3Kohms 0.05 | 3 | R5,R8,R15 |
| 291-1K-RC | 291-1K-RC | Xicon | Carbon Film Resistors - Through Hole 1Kohms 0.05 | 1 | R13 |
| 291-220-RC | 291-220-RC | Xicon | Carbon Film Resistors - Through Hole 220ohms 0.05 | 1 | R12 |
| 291-150-RC | 291-150-RC | Xicon | Carbon Film Resistors - Through Hole 150ohms 0.05 | 1 | R14 |
| 291-100-RC | 291-100-RC | Xicon | Carbon Film Resistors - Through Hole 100ohms 0.05 | 1 | R9 |
| 652-4607X-1LF-4.7K | 4607X-101-472LF | Bourns | Resistor Networks & Arrays 7pins 4.7Kohms Bussed | 1 | RN1 |

| | | | | | |
|--------------------------------------|------------------------------------|---------------------|---|-------------------|----------------|
| 81-BL01RN1A1E1A | BL01RN1A1E1A | Murata | Ferrite Beads AXIAL 6A | 3 | FB1 - FB3 |
| 652-EMI471T-RC | EMI471T-RC | Bourns | EMI Filter Circuits 470pF 20% 50VOLT 5AMP | 1 | LF1 |
| 512-KSA1015YTA | KSA1015YTA | ON Semiconductor | Bipolar Transistors - BJT PNP Epitaxial Transistor | 1 | Q4 |
| 512-KSC1815YTA | KSC1815YTA | ON Semiconductor | Bipolar Transistors - BJT NPN Epitaxial Sil | 3 | Q1 - Q3 |
| 774-1952MST | 195-2MST | CTS | DIP Switches / SIP Switches SPST 2 switch sections | 1 | S2 |
| 151-8000-E | 151-8000-E | Kobiconn | Headers & Wire Housings MINI JUMPER GF 6.0MM OPEN TYPE BLACK | 2 | |
| 517-D2534-6002-AR | D2534-6002-AR | 3M | Headers & Wire Housings 34P 4-WALL HEADER STRAIGHT 10U AU | 1 | J4 |
| 517-8934 | 89134-0103 | 3M | Headers & Wire Housings 34P IDC SOCKET | 1 | |
| 517-3365/34FT | 3365/34-CUT-LENGTH | 3M | Flat Cables .050 34 COND. 28AWG ROUND 1PC=1FT | 1 | Data Cable |
| or | | | | | |
| CB101637 | | BEST Electronics | 34F pin IDC socket to 34 Pin PC Mount ribbon cable assembly | 1 | Data Cable |
| | | | | | |
| Digikey # | Mfr. # | Manufacturer | Description | Order Qty. | Ref ID |
| CP-3313-ND | SDF-130J | CUI Inc | CONN RCPT FEMALE DIN 13POS SOLDER | 2 | J2 & J3 |
| X944-ND | ECS-100AX-080 | ECS Inc | XTAL OSC XO 8.0000MHZ TTL TH | 1 | Y1 |
| S1012EC-40-ND | PREC040SAAN-RC | Sullins | CONN HEADER VERT 40POS 2.54MM | 1 | JP1 & JP2 & J5 |
| Floppy Power Cable Parts | | | | | |
| A121828-ND | 171822-4 | TE | Conn Recept Housing 4POS | 1 | |
| A100869CT-ND | 170262-1 | TE | Conn Socket 20-26AWG Crimp Tin | 4 | |
| WM4202-ND | 22232041 | Molex | Conn Header Vert 4POS 2.54MM | 1 | J7 |
| WM2002-ND | 22013047 | Molex | Conn Hous 4POS .1 W/RAMP/RIB | 1 | |
| WM1114-ND | 08-50-0114 | Molex | Conn 22-30AWG Crimp TIN | 4 | |
| | | | Cable 22AWG Red 4" | 1 | |
| | | | Cable 22AWG Black 4" | 2 | |
| | | | Cable 22AWG Yellow 4" | 1 | |
| or | | | Always note voltage values. Do not mix +5V with +12V | | |
| Internal Floppy Power Cable Assembly | | Ebay | Molex 4-Pin Male to Floppy Disk Female power (cut off the 4-pin Molex male connector and solder directly to J5 board holes) 4" NOTE * 22 AWG Wire | 1 | |

Note *J6 is not populated at this time.



S2

Drive ID
J2

CPU Type
8050 8040
JP1 U1

C1

C2

9 12 13
5 8 4
1

J3

9 12 13
5 8 4
1

J4

C9
C10
C11
C13

RN1

LF1

R4
R5
R6

FB2
FB3
FB1

C4

U2

C3

U3

+5V
GND
CMD
DIN
DOUT
J5
Aux Int SIO
Only

R1
R2
R3

+5V
GND
GND
+12V
J7
Q1
Q2
Q3

R15
R7
R10



C8

C7

C6

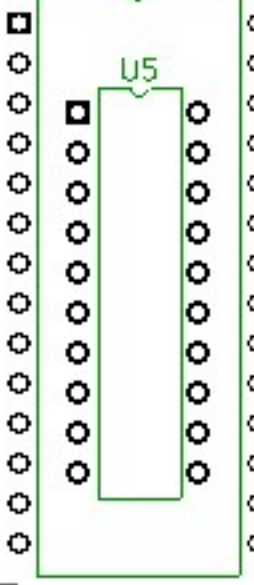
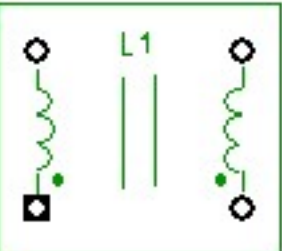
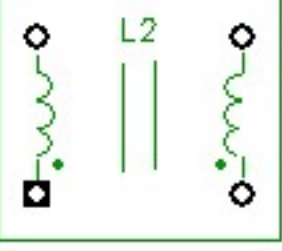
R8

R14
R13
R12

ZD1

1 +5V
4 +12V
2 GND
5 NC
3 GND
C13

OS1 OS2
JP2 U6



Q4

C5

J6
10 +5V
8 P27
6 OS
4 SIDE
2 DIRC

2 1
Control Board

S1
OFF
ON

SF551 v1.5
c 2019

Drop