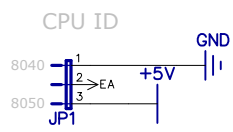
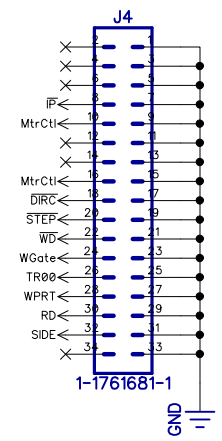
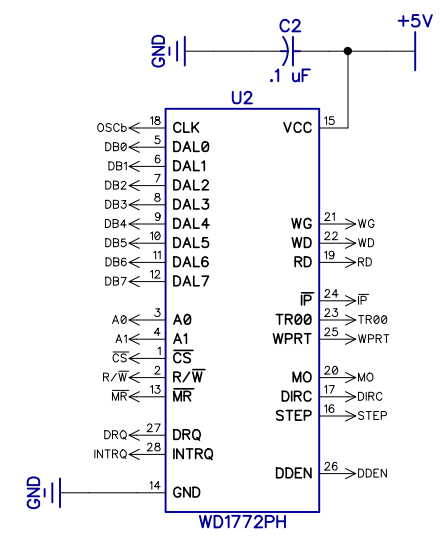
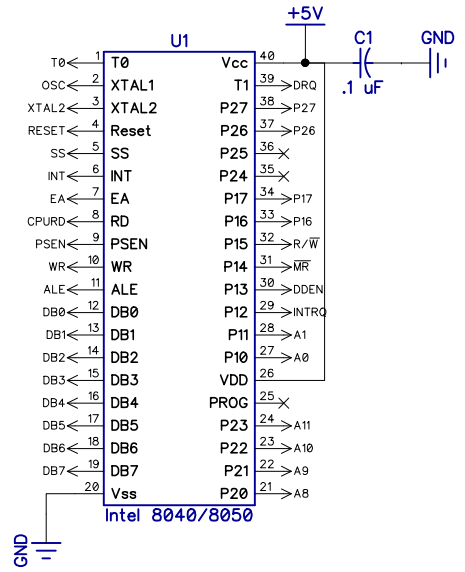
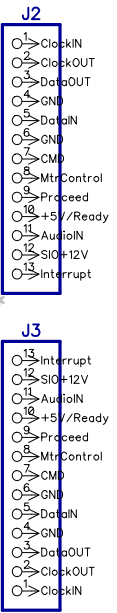
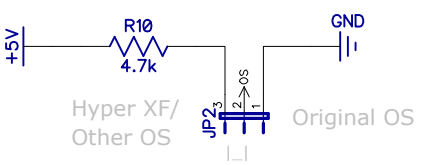
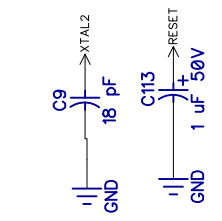


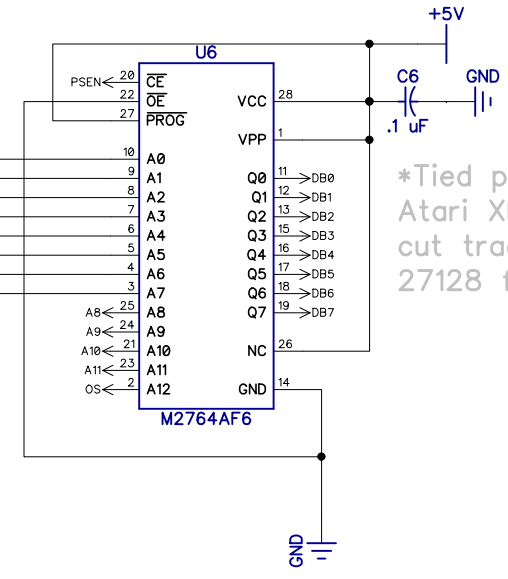
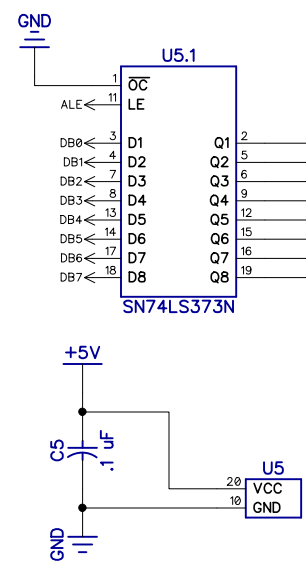
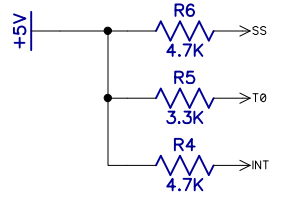
SIO Connectors



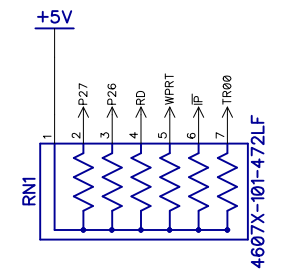
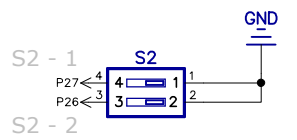
Jumper pin 1 and 2 normally. Only use 2 and 3 if using Atari supplied 8050 chip and you had no ROM in original XF551



Jumper to determine OS (Leave jumper off for mod board use)



*Tied pin 26 to +5V per Atari XF551 schematic cut trace to use with 27128 for 4in1 OS option



Floppy Drive Selector Matrix

S2-1	S2-2	Drive Sel
0	0	1
1	0	2
0	1	3
1	1	4

0 = OFF 1 = ON

Atari XF551 Reimaged Disk Drive PCB

Uses mostly original parts where possible.

Added 2in1 OS, aux SIO connection, dual track display and front panel controls

File: XF551OriginalB.dch

SIZE A

FSCM NO.

DWG NO. Final

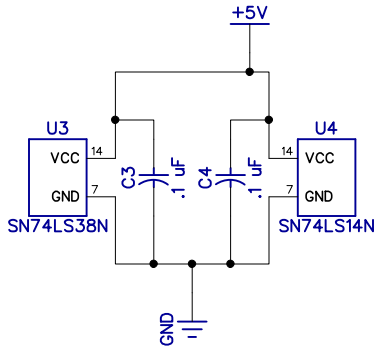
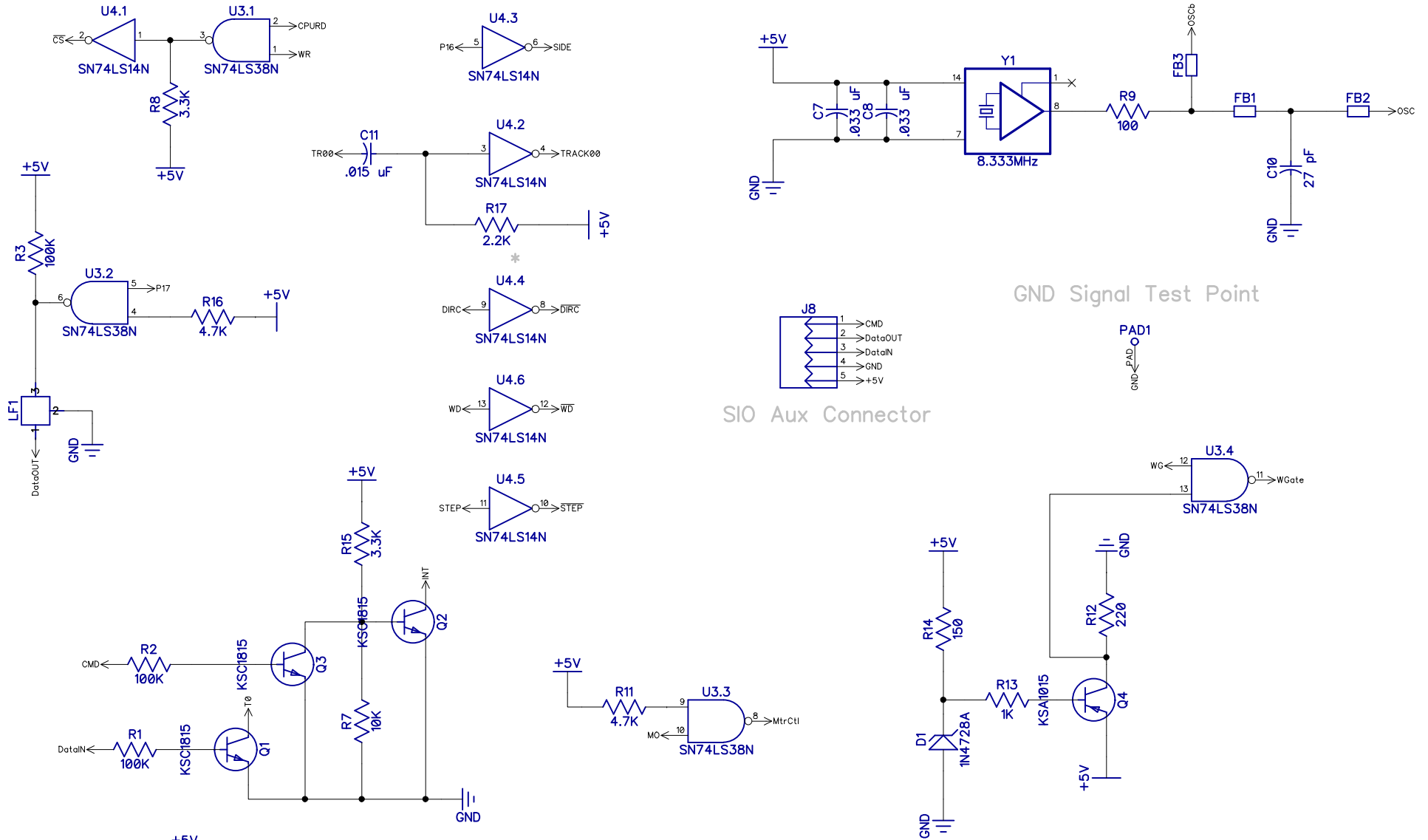
REV 7

Size: 150mm X 120mm

SCALE

Date:04/11/2024

Main



Atari XF551 Reimaged Disk Drive PCB

File: XF551OriginalB.dch

Size: 150mm X 120mm

Uses mostly original parts where possible.

Added 2in1 OS, aux SIO connection, dual track display and front panel controls

SIZE
A

FSCM NO.

DWG NO.
Final

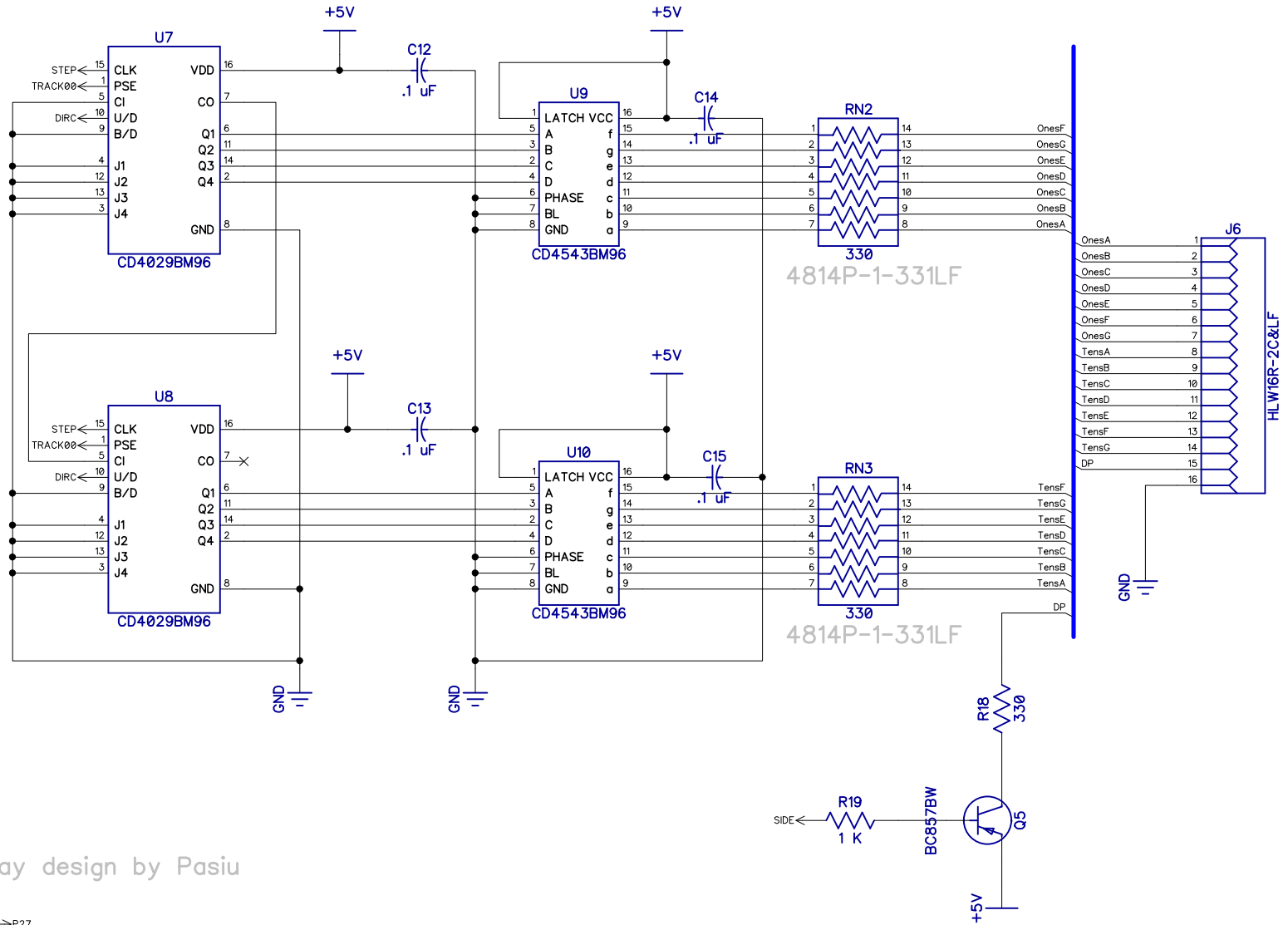
REV
7

SCALE

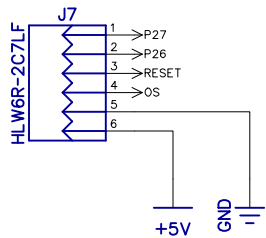
Date: 04/11/2024

Main2

This page of the schematic is optional to populate



Original Track Display design by Pasiu



Front Control

Atari XF551 Reimaged Disk Drive PCB

Uses mostly original parts where possible.

Added 2in1 OS, aux SIO connection, dual track display and front panel controls

File: XF551OriginalB.dch

SIZE
A

FSCM NO.

DWG NO.
Final

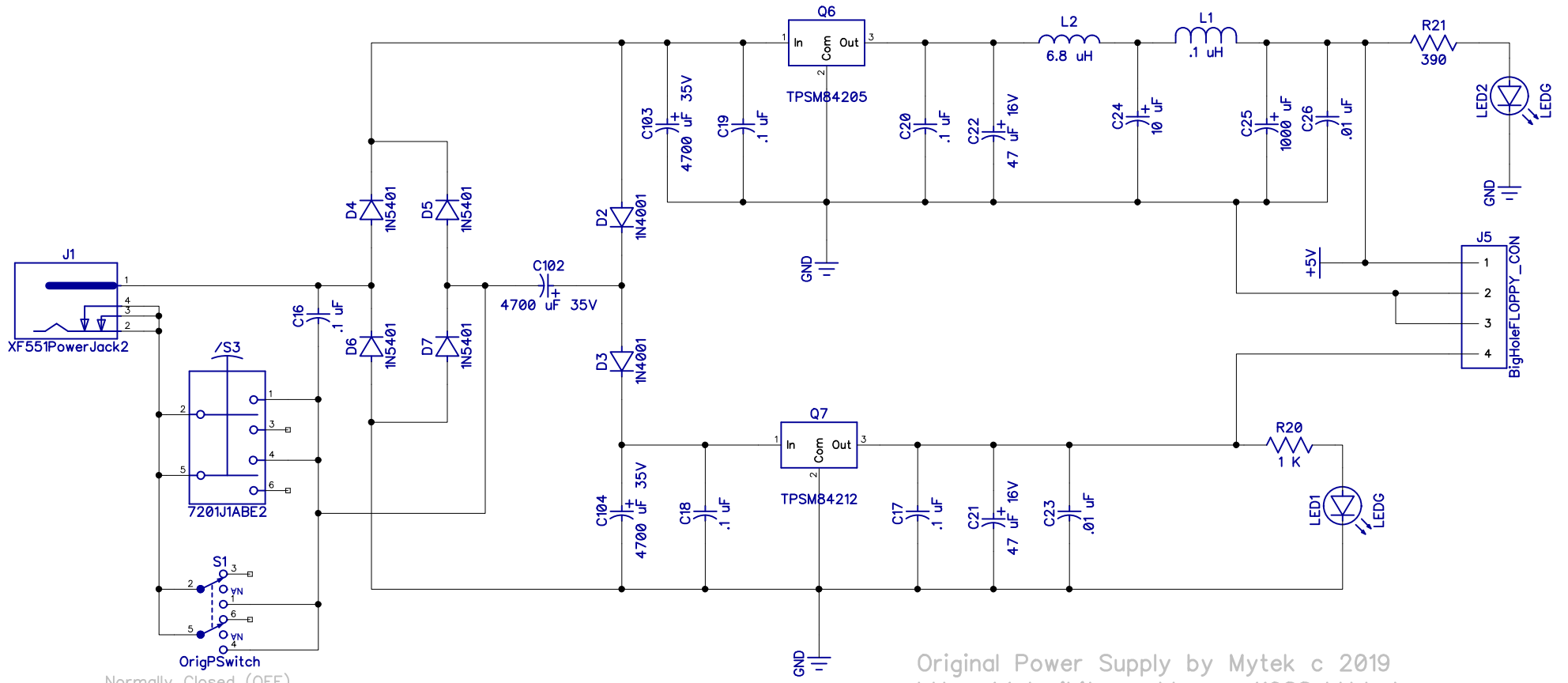
REV
7

Size: 150mm X 120mm

SCALE

Date: 04/11/2024

Track Display



Normally Closed (OFF)

Original Power Supply by Mytek c 2019
<https://ataribits.weebly.com/1088xld.html>
 Added option for alternate barrel power jack (PJ-102AH) J5 and power switch (7201J1ABE2) S3

Atari XF551 Reimaged Disk Drive PCB

Uses mostly original parts where possible.

Added 2in1 OS, aux SIO connection, dual track display and front panel controls

File: XF551OriginalB.dch

SIZE
A

FSCM NO.

DWG NO.
Final

REV
7

Size: 150mm X 120mm

SCALE

Date: 04/11/2024

Power Supply